

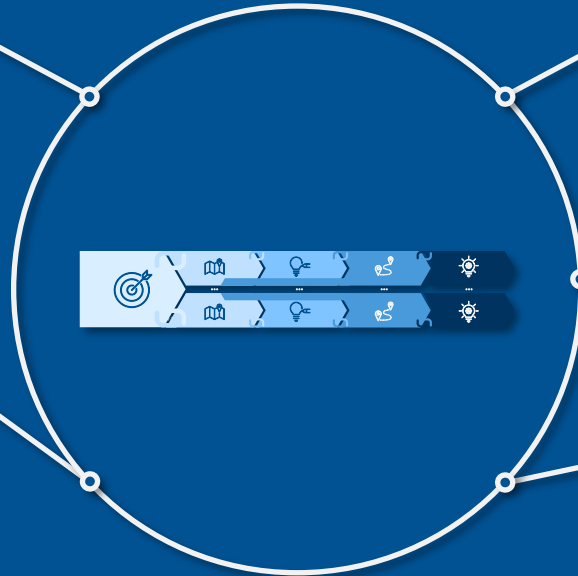
Intended Use of the Procedure Model

Purpose

Purpose of the procedure model is to guide engineers from the first vague idea of a DT over the development of different use cases towards the implementation of the final DT system. It entails specific activities as well as helpful methods and tools.

Scope

The procedure model with its activities, methods and tools is specifically designed for the development of digital twins. There is no further restriction of the applicability of the model. It should be suitable for all kinds of Digital Twin applications.



Coverage

The model covers all phases of the DT project from project initiation to implementation of the DT system. However, the use phase is not covered.

Benefit

This systematic approach supports engineers in efficiently developing DTs. Thus, it aims at reducing development effort and improve quality of the solution.

Conditions

The procedure model is linked to many other methods, which are required to conduct the activities. Especially, DTBMA, use case template and catalogue, and trust framework are helpful.